
CARE USA
2022 ANNUAL
REPORT



letter from the president and CEO



This past year we have faced some of the greatest humanitarian challenges since CARE's founding. From the war in Ukraine to the continuing pandemic, to a rapidly accelerating hunger crisis – all have had an enormous global impact and have made our work more challenging.

Through your collective generosity, CARE was able to tackle emergencies around the world and meet this moment. We were able to bring hope and critical assistance to millions of people, families, and communities. Together, we reached more than 174 million people across 111 countries.

To address the immense challenge of a global hunger crisis driven by conflict, climate change, and COVID-19, CARE launched a \$250 million comprehensive emergency response that delivered critical food aid and treatment for severe malnutrition while helping families build longer-term plans to withstand future shocks.

As the world opened up this year, we had opportunities to come together in person again. I was inspired by conversations with many of you and by seeing some of CARE's extraordinary work. In my travels, I heard stories of incredible impact in local communities.

In April, I traveled to Poland to meet Ukrainian refugees whose stories were harrowing in what they had survived, yet inspiring in their resilience. One, Liudmyla Staston, had just received certification to teach under CARE's partnership with the Polish Center for International Aid to hire refugee teachers. This, after fleeing Ukraine with her 13-year-old daughter and telling me she was still conducting Zoom classes with the students left behind.

My July trip to Kenya, Ethiopia, Tanzania, and Zambia impressed me with the extraordinary range of work CARE teams are doing. From emergency humanitarian work in the Horn of Africa to building out long-term development programming, the dynamism of Africa's new generation of leadership gives me great hope. To name one example, I witnessed the vibrancy of Loveness, a community health entrepreneur in Zambia called a "superwoman" by her friends who is pursuing her dream to buy land and a home for her family.

As we look to 2023, and beyond to 2030, our ambition is to meaningfully impact 200 million people as we seek to bring about a more just and equitable world, where poverty is shrinking, and gender equality is a growing reality. CARE will continue leaning into our deeply rooted local network of people and partners with decades of experience and evidence-based work to scale our programs and impact.

As we take stock and move forward, I want to express my deepest gratitude to each of you for your generosity and steadfast commitment to advancing CARE's mission and being a beacon of hope in a time when hope is desperately needed around the world.

Michelle Nunn

Michelle Nunn
President and CEO



Ignite

Research says glorifying multi-tasking by women entrepreneurs must stop

New research from CARE's Ignite program reveals a stark truth about women entrepreneurs: Despite some progress, gender norms keep women around the world from reaching their business ambitions.

One of the main culprits holding women back is community-wide glorification of multi-tasking by women entrepreneurs. The study showed how communities in the program countries still expect women to be primary childcare givers and men to be the primary breadwinners, even when women are top earners in the household.

For this study, CARE conducted a series of one-to-one interviews, focus groups, and surveys in Vietnam, Peru, and Pakistan to find out more about the beliefs and sometimes unstated expectations that continue to prevent women from reaching their goals.

The research revealed how ingrained these "social norms" are, as well as who is upholding them and how these beliefs and behaviors continue to prevent women entrepreneurs from fully succeeding.

Vietnam serves as a case study for how unproductive these attitudes can be. There, 80% of men and 60% of women agreed that businesswomen should be the main childcare giver. And 76.6% of those over age 51 agreed that men should be the main breadwinner for their households.

Mothers-in-law were revealed as the staunch upholders of the norm related to childcare, the ones who would most disapprove if the man does more childcare than the woman. Surprisingly, this was followed closely by the woman entrepreneur herself.

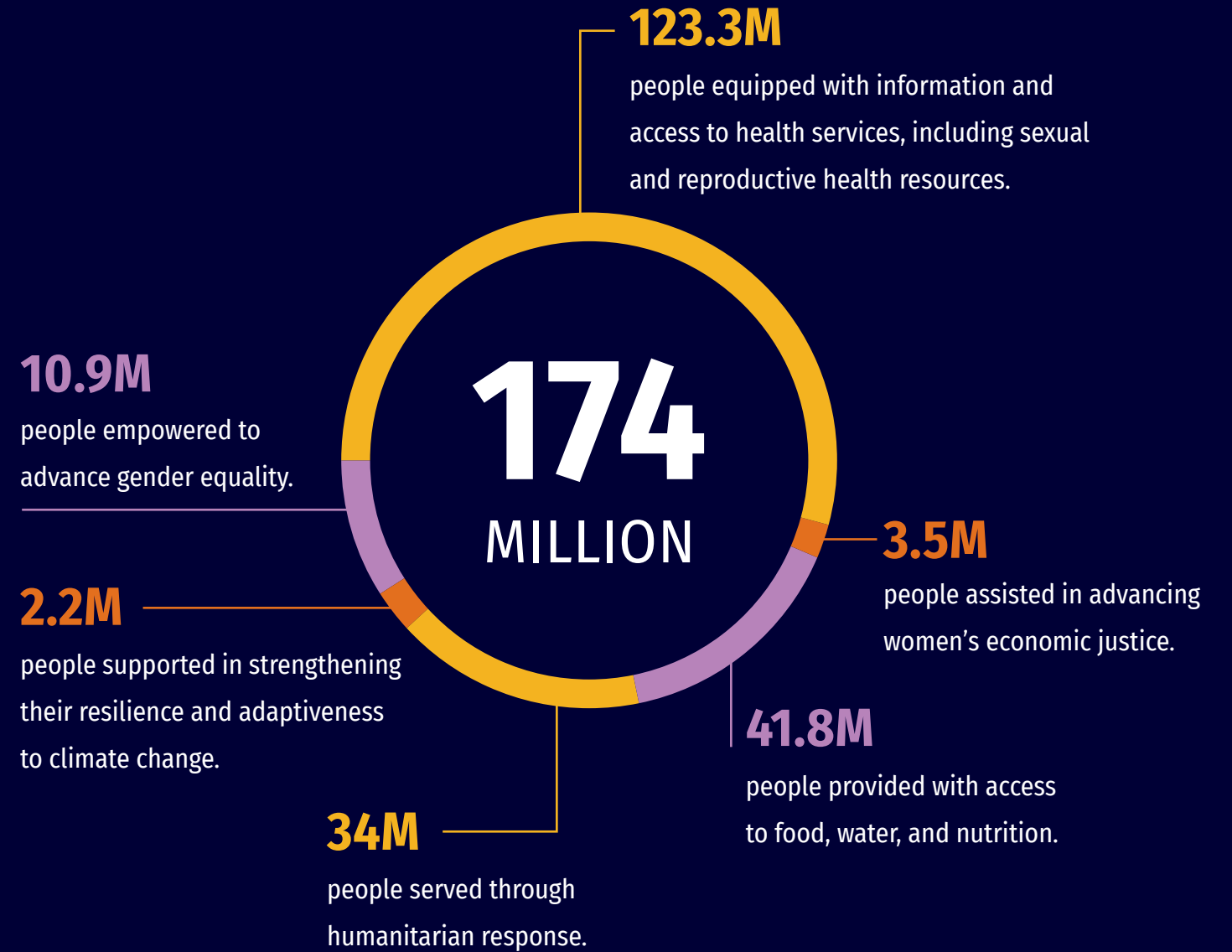
One bright spot: Only 36.7% of 26-to-50-year-olds agreed with the norm that women should be the main caregiver, showing a more progressive response by the younger cohort toward traditional gender roles.

Work on financial inclusion to date has been focused on products and services, without fully understanding and addressing what is preventing women from accessing or using them. Very few organizations working in this field are addressing the gender norms that hold women entrepreneurs back, as it requires longer-term commitment.

1,631 PROJECTS

111 COUNTRIES

174M PEOPLE



86% of projects integrated gender into their work.

50% of projects included moderate or intensive advocacy.



CLIMATE

Pakistan

Zarbano was forced to flee her home after unprecedented monsoon rains flooded two-thirds of Pakistan, and ever since, she and her family have been traveling from shelter to shelter. She went into labor at 2 a.m. Women from nearby tents came to help, but there were no health or medical services available. Despite the risks, Zarbano gave birth to her seventh child later that morning.

The crisis in Pakistan is not over. With entire villages swept away and people living out in the open, the usual social structures that keep people safe – particularly women and girls – have fallen away. The U.N. estimates there are almost 650,000 pregnant women in the affected areas, with up to 73,000 expected to give birth in the next month. Many worry the climate crisis will make this the new normal.

“Today, it’s Pakistan,” says Adil Sheraz, CARE Pakistan’s country director. “Tomorrow, it could be another country.” CARE has been providing shelter kits with everyday essentials, but the country’s needs continue to grow. “CARE has already started supporting communities,” Sheraz says, “but the need is enormous.”



FOOD & WATER

Somalia

Before last year’s drought, Nurta had 100 cows and 80 goats. But by September of 2021, only three cows and five goats remained. The lack of water and pastureland forced Nurta and her oldest child to leave their home for a camp for displaced persons in nearby Dhobley. Now, in 2022, after four failed rainfall seasons, two desert locust infestations, and the economic fallout caused by COVID and the war in Ukraine, food security experts are projecting possible famine.

Nearly 8 million people in Somalia now suffer severe food shortages, more than 200 children have died from starvation, and hundreds of thousands of people have, like Nurta, left their homes in search of food and water. CARE is scaling up its response to the crisis through health and nutrition programs like the one in Dhobley, as well as assistance with water, sanitation, and hygiene. CARE also is providing food and livelihood support in the form of cash and vouchers, so people can choose how best to prioritize their household finances.



CRISIS

Ukraine

This year more than 14 million Ukrainians fled their homes due to the war, with nearly 8 million seeking refuge in neighboring countries. Roughly 90% of the refugees are women and children. The trauma of continued displacement, loss of livelihoods and access to markets, and exposure to conflict has taken a toll on Ukraine’s people. Children have been robbed of their childhood and education as their parents struggle to ensure their family’s survival. In response, CARE formed partnerships with organizations in Ukraine and neighboring countries to provide much-needed cash assistance, food, shelter, and protection from gender-based violence.

To date, we have reached more than 960,000 people within Ukraine and in neighboring countries, including more than 114,000 in Poland. In March, CARE and the Polish Center for International Aid launched a program to hire Ukrainian refugees as teachers in Polish schools, helping ease the burden of new enrollment while providing children with own-language instruction and adults with much-needed employment. To date, 790 teachers and school staff have been employed through this program, benefiting 39,500 people directly.



stories of impact



EQUALITY

Bangladesh

One in three women will experience gender-based violence in her lifetime, and by all observations, that figure rises during humanitarian emergencies. Despite the higher risk of violence and child marriage, early marriage, and forced marriage during emergencies, services and support for survivors become harder to come by. At the same time, women's voices and perspectives are regularly kept out of leadership and decision-making around solutions.

Here, girls are fighting injustice like child marriage with the help of CARE's Tipping Point project, which focuses on identifying the causes of early marriage and supporting girls and their families to create alternative paths for adolescent girls. Thanks to Tipping Point, Anannya, 16, and her friends have successfully challenged village gender norms, but work remains around the globe to ensure every girl's voice is heard.



HEALTH

Sudan

Dr. Gisma Awad Hassan Rwah, the only doctor near the Sudanese village of Gorlangbang, is navigating the country's ongoing military conflict in order to treat patients in a mountaintop clinic without electricity and accessible only by donkey. "I chose to become a doctor because it's such an important job. I have saved the lives of many people and can help people in emergencies," Gisma says. "As a doctor, I can help people who are in pain, have illnesses, and even experience psychological pain. It is beautiful work."

Over the past year and a half, CARE has brought equipment, supplies, and medicines up the mountain to build the Gorlangbang health and nutrition clinic. Here, CARE has trained and supported local health assistants, pharmacists, midwives, nutrition assistants, and community health volunteers. "The happiness of people makes me smile from my heart," Gisma says. "When I feel the people are happy, all my tiredness is gone by knowing people are healthy."



EDUCATION & WORK

Ghana

Barbara, 60, a retired teacher in Larwehkrom, a cocoa farming community in western Ghana, was already a leader in her community. Now, thanks to training and tools from CARE, she's more effective, and Larwehkrom is better for it. According to the U.N., Ghana had a 5.6% prevalence of severe hunger and a 36.6% prevalence of moderate or severe food insecurity in 2020. And that was before massive disruptions to global food systems from the war in Ukraine hit even small farming communities like this one, doubling the prices of basic staples.

Barbara has been working with CARE to make sure local food systems are as stable and resilient as possible when crisis comes. She learned homestead gardening, launched a chicken production business, and took on a leadership position with a Village Savings and Loan Association, which grew into a network of VSLAs.

"Now, the women have money. They have jobs. They can work in markets. They can buy. They can sell. They have been led out of this poverty. And then what else do you have? We have security now."



2022 Global Reach

East, Central, and Southern Africa

- 19.1M people
- 395 projects
- 16 countries

West Africa

- 5.9M people
- 232 projects
- 14 countries

Asia and Pacific

- 141.5M people
- 510 projects
- 24 countries

Latin America and Caribbean

- 1M people
- 184 projects
- 14 countries

Middle East, North Africa, and Europe

- 6.2M people
- 287 projects
- 37 countries

North America

- 22,000 people
- 19 projects
- 2 countries

IN FISCAL YEAR
2022, CARE WORKED
IN 111 COUNTRIES
AROUND THE WORLD

CARE International Country Presence for FY22:

- | | | |
|--------------------------------------|------------------|------------------------------------|
| 1. Afghanistan | 28. Denmark** | |
| 2. Albania¥ | 29. Ecuador | |
| 3. Algeria¥ | 30. Egypt** | |
| 4. Armenia¥ | 31. El Salvador¥ | |
| 5. Australia** | 32. Ethiopia | |
| 6. Austria** | 33. Fiji¥ | |
| 7. Azerbaijan¥ | 34. France** | 55. Luxembourg** |
| 8. Bangladesh | 35. Georgia** | 56. Madagascar |
| 9. Belgium^∅ | 36. Germany** | 57. Malawi |
| 10. Benin | 37. Ghana | 58. Mali |
| 11. Bosnia and Herzegovina | 38. Guatemala | 59. Mauritania¥ |
| 12. Botswana¥ | 39. Guinea | 60. Mexico¥ |
| 13. Brazil¥ | 40. Haiti | 61. Moldova¥ |
| 14. Burkina Faso | 41. Honduras | 62. Montenegro¥ |
| 15. Burundi | 42. India** | 63. Morocco** |
| 16. Cambodia | 43. Indonesia** | 64. Mozambique |
| 17. Cameroon | 44. Iraq | 65. Myanmar |
| 18. Canada** | 45. Japan** | 66. Nepal |
| 19. Central African Republic¥ | 46. Jordan | 67. Netherlands** |
| 20. Chad | 47. Kenya | 68. Nicaragua¥ |
| 21. Colombia | 48. Kiribati¥ | 69. Niger |
| 22. Costa Rica¥ | 49. Kosovo | 70. Nigeria |
| 23. Côte d'Ivoire | 50. Laos | 71. North Macedonia¥ |
| 24. Croatia¥ | 51. Lebanon | 72. Norway** |
| 25. Cuba | 52. Lesotho¥ | 73. Pakistan |
| 26. Czech Republic** | 53. Liberia | 74. Palestine (West Bank and Gaza) |
| 27. Democratic Republic of the Congo | 54. Libya¥ | 75. Papua New Guinea |
| | | 76. Peru** |
| | | 77. Philippines |
| | | 78. Poland |
| | | 79. Romania¥ |
| | | 80. Rwanda |
| | | 81. Samoa¥ |
| | | 82. Senegal¥ |
| | | 83. Serbia |
| | | 84. Sierra Leone |
| | | 85. Slovakia¥ |
| | | 86. Solomon Islands¥ |
| | | 87. Somalia |
| | | 88. South Africa¥ |
| | | 89. South Sudan |
| | | 90. Sri Lanka** |
| | | 91. Sudan |
| | | 92. Switzerland^ |
| | | 93. Syria¥ |
| | | 94. Tanzania |
| | | 95. Thailand** |
| | | 96. Timor-Leste |
| | | 97. Togo |
| | | 98. Tonga¥ |
| | | 99. Tunisia¥ |
| | | 100. Turkey |
| | | 101. Tuvalu¥ |
| | | 102. Uganda |
| | | 103. Ukraine |
| | | 104. United Kingdom**^ |
| | | 105. United States of America** |
| | | 106. Vanuatu |
| | | 107. Venezuela¥ |
| | | 108. Vietnam |
| | | 109. Yemen |
| | | 110. Zambia |
| | | 111. Zimbabwe |

● CARE International Members, Affiliates, and Candidates.

● CARE presence via Country Offices, work with/through partners, or other types of offices.

** CARE International Members, Affiliates, and Candidates.

¥ Limited CARE presence, mostly working with/through strategic partnerships.

^ The Secretariat has offices in Belgium, Switzerland, and the UK, and staff based in 14 countries.

∅ Other registered offices.

¹ CARE International Members, Candidates, and Affiliates may implement projects and initiatives in their own countries.

CARE International acknowledges the existence of divergent views to certain territories. CARE International aligns with United Nations-sourced maps for consistency purposes; this use does not imply a political statement on any given country or territory.

Thanks to our partners

This has been a year of unprecedented challenge. COVID may have receded as a pandemic in some parts of the world, but the disruption and damage it wrought will take years to undo. Climate change is no longer a future specter, but a present reality, driving cycles of flooding, drought, and extreme temperatures, while wrecking lives and livelihoods. Meanwhile, conflict continues around the world from Yemen to the Democratic Republic of the Congo to, most recently, Ukraine.

Throughout it all, vital support from individuals, foundations, corporations, and other partners has enabled us to meet the demands of the moment, responding to each appeal, and stepping up when the need demands it. When it was evident that the toxic combination of COVID disruption, climate change effects, and conflict was leading to an unprecedented hunger crisis, our partners answered the call as we launched a \$250 million comprehensive response to global hunger. Our work is possible only because of you.



featured foundations



The Bill & Melinda Gates Foundation and CARE built on more than two decades of partnership through initiatives spanning gender equality, advocacy, food security, health, family planning, water and sanitation, emergency response, and livelihood programming. New investments supported CARE's emergency responses to drought and food insecurity in Kenya and cyclones in Madagascar. In addition, the foundation's catalytic support for emergency relief in Afghanistan enabled CARE to deliver key winterization aid. The foundation continued to support CARE's U.S. advocacy work, including the Learning Tours program, as well as ongoing efforts to reduce maternal and neonatal mortality in the Indian state of Bihar.

CARE and the **Rockefeller Foundation** created a gender equality-focused artist fellowship, which includes a residency for selected artists. Leveraging collective action and the power of the arts, the partnership widens engagement with a range of audiences and drives momentum and global dialogue on gender equality. The Rockefeller Foundation, the Global Energy Alliance for People and Planet, and CARE launched a new initiative, Solar Harnessed Entrepreneurs (SHE), to support women in Sierra Leone's mini-grid-connected communities to start profitable and sustainable energy-enabled businesses. SHE links to the Government of Sierra Leone's Rural Renewable Energy Project, one of the largest green mini-grid projects on the continent.

The David and Lucile Packard Foundation and CARE partnered on the She Leads in Crisis initiative to promote women's leadership and responses in humanitarian crises, since women are disproportionately affected. Through elevating critical evidence and amplifying women's voices at all levels, the project will contribute

to transformational changes in the policies and practices of national governments and international institutions, resulting in stronger and more gender-equitable responses to emergencies. In Ukraine, the foundation provided vital resources for CARE's emergency response efforts, supporting the provision of lifesaving humanitarian efforts and fueling food relief and cash assistance.

In Ethiopia, the **Conrad N. Hilton Foundation** and CARE are working to enhance water, sanitation, and hygiene (WASH) governance by strengthening systems within the Ethiopian Ministry of Water, Irrigation, and Energy to be more gender inclusive. These efforts contribute both to achieving gender justice and ensuring high-quality service delivery on the ground. Strengthening the links between the Water and Women's Ministries in Ethiopia will facilitate better incorporation of gender into decision-making and WASH service design and delivery, laying the groundwork for sustainable gender integration at the national, regional, district, and end-user level in Ethiopia.

Center for Disaster Philanthropy deepened its partnership with CARE to support humanitarian action, emergency response, and early recovery efforts. In Tonga, CDP and CARE teamed up to advance the recovery needs of people directly affected by the eruption of the Hunga Tonga-Hunga Ha'apai volcano and underwater tsunami and to improve disaster preparedness. In Mali, CDP is working with CARE to address the humanitarian crisis. Specifically targeting the needs of women and girls for early recovery, these efforts aim to build resilience and increase incomes and access to financial services for participants through VSLAs.

Ukraine Humanitarian Crisis Fund

We are grateful to the many corporate partners that made immediate and significant investments in CARE's Ukraine Humanitarian Crisis Fund. Flexible funding has enabled us to meet the urgent needs of nearly a million people since the onset of the war. CARE and our local partners provided meals, water, hygiene kits, and cash assistance to hard-to-reach communities in Ukraine. We offered lifesaving health services and assisted survivors of sexual and gender-based violence. We worked at border crossings in Poland and Romania and provided traumatized children with psycho-social support. We've set up a Country Office in Poland and provided shelter and temporary housing to thousands of refugees. We've hired Ukrainian teachers to teach in Polish schools and establish after-school programs to ensure that Ukrainian students can continue their education.

Thank you to all of our FY22 Ukraine Humanitarian Crisis Fund corporate donors (\$100K+) whose contributions are helping us deliver lifesaving and longer-term recovery assistance: AB InBev, Abbott, Ametec, Aptar, Aura, Bank of America, BIS, Boeing, Cargill, Conair, Global Impact, GSN Games, Jefferies Group, Komatsu, Levi's/Beyond Yoga, New Balance, Organon, PwC, Ralph Lauren, Snap, The Southern Company Foundation, Timex, and The UPS Foundation.



Cisco and Twilio

With generous support from Cisco and Twilio.org, CARE has been developing an Emergency Communication Management (ECM) platform to accelerate the dissemination of key information around COVID-19 vaccinations via text and WhatsApp messages in Bangladesh and Jordan, with the intent of increasing demand. CARE Bangladesh already has communicated with and helped more than 522,000 people (primarily factory workers in Gazipur) to receive their first dose of vaccine, with an additional 51,000+ receiving a second dose and/or booster shot. Project-trained community health volunteers have helped more than 15,000 register for government-run vaccination campaigns and established a database of more than 172,000 people. This project has allowed CARE to test different digital engagement technologies and processes as we strive to centralize our global communications capabilities across all the countries where CARE works. CARE's ECM platform will help us save lives, not only from COVID-19, but also from other diseases and in future crisis situations.

Cargill

For over 60 years, CARE and Cargill have partnered with communities worldwide to address critical challenges – from delivering CARE Packages to World War II survivors to addressing inequity in agricultural communities around the world. Since 2008, both organizations have launched 32 programs across 13 countries, impacting the lives of more than 4.6 million people. Our latest phase of partnership, PROSPER II (2019-2022), built resilience across communities in the face of the COVID-19 pandemic, natural disasters, and economic crises. We focused on areas and communities where we could deliver the most impact. Through an integrated approach under the She Feeds the World framework, PROSPER II led to increased access to farm resources, better household nutrition, reduced food insecurity, women's empowerment, greater market access, and economic opportunities for women and their families. The partnership between our organizations has just been renewed, and together we aim to build a resilient food system and improve food security for an additional 1.6 million people by 2025.

donors and partners

Global Leadership Society

Cumulative Lifetime Giving:
\$1,000,000+

#StartSmall

AB InBev

Abbott

David T. and Jean K. Akers

Amway

Nancy K. Anderson

The Annenberg Foundation

Anonymous (38)

Armacost Charitable Remainder

Unitrust

David R. and Patricia D. Atkinson

The David R. & Patricia D. Atkinson
Foundation

The Atlantic Philanthropies

Estate of Barbara L. Bacich

Marietta and Jim Bala

E. T. Baldrige

Margaret D. and Matthew T. Balitsaris

Paul and Mary Jan Bancroft

Bank of America

Benevity

The Bezos Family Foundation

Ken Birman and Anne Neiryneck

Blackstone

The Arthur M. Blank Family Foundation

Bloomberg Philanthropies

Estate of William E. Boeing III

The Boeing Company

The Dietrich W. Botstiber Foundation

Estate of Daniel L. Brenner

Finn Brooks Family Foundation

The Howard G. Buffett Foundation

Helen and Harold Buirkle

Priscilla Bullitt Charitable Trust

C.E. and S. Foundation Inc.

California Community Foundation

Cargill

Eduardo Castro-Wright and Fabiola

De Castro

Center For Disaster Philanthropy

The Church of Jesus Christ of Latter-
day Saints

Cisco Systems Inc. and the Cisco
Foundation

The Coca-Cola Company

Colgate-Palmolive

Estate of Priscilla B. Collins

The Community Foundation for
Greater Atlanta

Community Foundation for Southern
Arizona

Community Foundation of Greater
Memphis

Alison A. Cornell

Covance Inc.

Credit Suisse

The Eleanor Crook Foundation

Susan M. Crown

Estate of J.W. Culler

Cummins Foundation

DAF

Rosalie A. Danbury

Michael and Susan Dell Foundation

Delphi Asset Management

Delta Air Lines

Estate of Elaine Dooman

Dubai Cares

ECLT Foundation

Educate A Child

Joseph H. and Barbara I. Ellis

ELMA Philanthropies

Nancy L. Evans Admin Trust

Estate of Lucia P. Ewing

Estate of Saralee Fine

Estate of Janet A. Fisher

The Flatley Foundation

The Ford Foundation

Frees Charitable Fund

Estate of Esther Freier

Lloyd A. Fry Foundation

Murphy Family Fund

Gap Foundation

Bill & Melinda Gates Foundation

GE Foundation

General Mills Foundation

Global Environment Technology
Foundation

Global Impact



Goldman Sachs
Guilford Fund
Eliyahou and Britt Harari
Estate of John M. Harding
Estate of Juliet F. Harding
Wayne R. and Camellia A. Helsel
The William and Flora Hewlett
Foundation
Conrad N. Hilton Foundation
Estate of David James Hofheinz
Justin S. and Hilarie V. Huscher
Glenn H. and Deborah Dow Hutchins
Hutchins Family Foundation Inc.
Jahn's Private Charitable Foundation
The Jefferies Group
Johnson & Johnson
Sheila C. Johnson
The Robert Wood Johnson Foundation
The Jordan Family
Steve Joyce
JPMorgan Chase Foundation
Estate of Mark Eisner, Jr.
Michael G. and Nancy O. Kaehr
Peter H. and Joan M. Kaskell
Dean C. and Elizabeth H. Kehler
Rosalind and Michael Keiser
W.K. Kellogg Foundation
The Kendeda Fund
Estate of Mary B. Ketcham
Julie Konigsberg
The Kresge Foundation
The LeBrun Foundation
Levi Strauss Foundation
lululemon USA Inc.
Elizabeth M. Lutas
The John D. and Catherine T.
MacArthur Foundation
Mars
John Martello
Mastercard
The MathWorks Inc.
The Anita M. McCullough Living Trust
The Andrew W. Mellon Foundation
Merck & Co. Inc.
Meta
H. Conrad III and Sarah S. Meyer
Microsoft Corporation
Millennium Water Alliance
Mondelez International Foundation
Gordon and Betty Moore Foundation
William S. and Jane R. Mosakowski
Charles Stewart Mott Foundation
Multiple District 19 Lions
Estate of Julia Van Munster
Estate of Mary E. Murdock

National Philanthropic Trust
New Venture Fund
The New York Community Trust
NIKE Foundation
Oak Foundation
Daniel Oliver Revocable Trust
Open Society Foundations
Oracle
The Osprey Foundation
Estate of Leonard R. Overton
P&G
The David and Lucile Packard
Foundation
The Panaphil Foundation
Chang K. Park
The Peierls Foundation
Betsy and Jim Pentecost Fund
The PepsiCo Foundation
Estate and Trust of Angelina P.
Perdomo
Estate of Juan M. Perdomo
Pew Charitable Trusts
Pfizer Foundation
The Picower Foundation
Power and Telephone Supply
Company
Genie and Scott Randell
Reach Out to Asia
The Rockefeller Foundation
Estate of Hazel Gibbons Ross
Ben and Luanne Russell
John and Virginia Sall
Sall Family Foundation
The San Francisco Foundation
Sheryl Sandberg and Tom Bernthal
Saperlipopette
SAS Institute Inc.
Estate of Kendrick Schlatter
Estate of Ronald and Elisabeth Schodt
Schultz Family Foundation
The Charles Schwab Corporate
Foundation
MacKenzie Scott
Silicon Valley Community Foundation
Harold Simmons Foundation
Brian J. Smith and Laurel Spellman
David A. Smith and Nancy H. Smith
Snap Inc.
Sony Music Entertainment
Theodore R. and Vada S. Stanley
Starbucks Coffee Company / The
Starbucks Foundation
The Sunbridge Foundation
Estate of Leonard Surratt
Estate of Samuel H. Talley
Target

Daniel M. Tellep
The David Tepper Charitable
Foundation Inc.
The Tides Foundation
Tiffany & Co.
Tijori Foundation
TOSA Foundation
Trehan Foundation
William D. Unger
United Nations Foundation
The UPS Foundation
Visa Inc.
Deidra J. Wager
The Walmart Foundation
Diana Walsh and Kent Walker
Weyerhaeuser Company Foundation
Michael and Geraldine Wiles
A. Morris Williams Jr.
Thomas L. Williams Trust
The Willow Springs Foundation
Wisconsin Evangelical Lutheran Synod
The Robert W. Woodruff Foundation
World Wings International

Global Leadership Society

FY22: \$1,000,000+

AB InBev

Abbott

Anonymous (5)

Benevity

The Bezos Family Foundation

The Arthur M. Blank Family Foundation

Bloomberg Philanthropies

Boeing

Cargill

The Church of Jesus Christ of Latter-
day Saints

Cummins Foundation

Educate a Child

Fidelity Charitable Gift Fund

Bill & Melinda Gates Foundation

Estate of David James Hofheinz

The Jefferies Group

The Kendeda Fund

lululemon USA Inc.

Mars

Mastercard

The MathWorks Inc.

Meta

William S. and Jane R. Mosakowski

Murphy Family Fund

National Philanthropic Trust

Estate of Leonard R. Overton

The David and Lucile Packard
Foundation

The PepsiCo Foundation
Estate of Juan M. Perdomo
Pfizer Foundation
The Rockefeller Foundation
Sall Family Foundation
Sheryl Sandberg and Tom Bernthal
Schwab Charitable Fund
MacKenzie Scott
Snap Inc.
Tijori Foundation
Vanguard Charitable
Diana Walsh and Kent Walker
Thomas L. Williams Trust

Founder's Council Violeta Chunchu Society

FY22: \$500,000-\$999,999

Anonymous (4)

Apple

David R. and Patricia D. Atkinson

Bank of America

Ms. Katherine Bishop

Bok Family Foundation

Cisco Systems Inc. and the Cisco
Foundation

The Coca-Cola Company

Bradley N. Currey Jr. IRA

DAF

The Flatley Foundation

General Mills Foundation

The Greater Cincinnati Foundation

Donald Hastings

Conrad N. Hilton Foundation

Hutchins Family Foundation Inc.

The Jordan Family

Sati Ram Manvi Trust

John Martello

P&G

SAS Institute Inc.

Target

TOSA Foundation

Twilio.org Impact Fund

The UPS Foundation

The Willow Springs Foundation

Zukowski Giving Fund

Founder's Council Lydia Marshall Society

FY22 \$250,000-\$499,999

AARP Foundation

Anonymous (3)

Astellas Global Health Foundation

Marietta and Jim Bala

Bank of America Charitable Gift Fund

Beyond the 11th

Thomas C. Bishop

The Dietrich W. Botstiber Foundation
 Bright Funds Foundation
 Center for Disaster Philanthropy
 Alison A. Cornell
 Estate of Richard A. Cramer
 Eleanor Crook Foundation
 The Frees Foundation
 The Giving Block
 Global Environment Technology Foundation
 Estate of William E. Goggin
 Houlihan Lokey, Inc.
 Michael G. and Nancy O. Kaehr
 The Koum Family Foundation
 Charles Lamar Family Foundation
 Sharon M. McMahon
 The New York Community Trust
 Organon
 Chang K. Park
 The Peierls Foundation
 PricewaterhouseCoopers
 Norberto Priu
 Estate of Adelaide I. Richter
 Ripple
 Victor Shaburov
 Southern Company Charitable Foundation
 Lois and Arthur Stainman
 The Sunbridge Foundation
 The T. Rowe Price Program for Charitable Giving
 John A. Weldon Retirement Account

**Founder's Council
 Murray Lincoln Society**
FY22: \$100,000-\$249,999

Acuity Insurance
 Airbnb.org
 American Endowment Foundation
 American Express
 Ametek Incorporated
 Anonymous (16)
 Aptar
 Ares Charitable Foundation
 Aura
 Paul and Mary Jan Bancroft
 Bank of International Settlements
 Shirley Ann Barcelon Charitable Trust
 Dr. Cori Bargmann
 Belmont Village
 Peter and Sarah Beshar
 Beyond Yoga
 Binance Charity Foundation
 Finn Brooks Family Foundation
 Jack Butcher

Estate of James K. Byrne
 The Cable Company
 Carnegie Corporation of New York
 Eduardo Castro-Wright and Fabiola De Castro
 Don W. Cleveland and Margaret A. Lopata
 Code Green Earth
 H. Rodgin and Barbara Cohen
 Conair
 Crown Family Philanthropies
 Rosalie A. Danbury
 Delta Air Lines
 Estate of Alfonso Demeo
 Dentons
 David and Anne Devereux-Mills
 Estate of Jane C. Drorbaugh
 Dubai Cares
 Hannelore D'Elia Trust
 Bart D. Ehrman
 Stephen Esser and Dana Dortone
 Estate of Robert B. Francini
 Gap Foundation
 GE Foundation
 Richard Gere
 Global Water Challenge
 GoFundMe
 Goldman Sachs
 Green Family Foundation
 Michelle Griffin and Thomas Parker
 GSN Games
 Guilford Fund
 Agnes Gund
 Jay Hallik and Vanessa Hallik
 Estate of Gabriele Handy
 Hansae Co., Ltd.
 Eliyahou and Britt Harari
 John Otto Hass
 Wayne R. and Camellia A. Helsel
 Dale and Louise Henderson
 Natalie Hershlag
 Lyda Hill Fund of Communities Foundation of Texas
 Hoag Family Charitable Foundation
 Estate of Sandra J. Hobbis
 Hopper-Dean Family Fund
 Impact Assets
 ITT Inc.
 Eugene P. Jacoby
 Jaswa Family Fund
 Jenner & Block
 Marilyn and Jeffrey Katzenberg Foundation
 Rosalind and Michael Keiser
 Estate of David H. Keith

Estate of Helen I. Khan
 Robert M. Knollenberg
 Gerald A. & Karen A. Kolschowsky Foundation Inc.
 Julie Konigsberg
 Harold J. Kuhfuss Revocable Living Trust
 Burton J Larkins Living Trust
 Marilea Larm Trust
 Levi Strauss Foundation
 Juan & Gisela Llibre Family Trust
 Ann Markowitz
 Mary Kay Inc. and the Mary Kay Ash Foundation
 John W. and Annie Mason
 Pamela B. McCabe
 Microsoft Corporation
 Morgan Stanley
 The Elizabeth Morse Charitable Trust
 Network for Good
 New Venture Fund
 Robert D. O'Toole
 Susan O'Connor
 Olayan Group and the Suliman S. Olayan Foundation
 Open Society Foundations
 The Osprey Foundation
 Betsy and Jim Pentecost Fund
 PepsiCo
 Kathleen Peto and Daniel Rice
 Estate of Robert A. Prendergast
 Public Consulting Group
 PUR Cosmetics
 Ralph Lauren
 Genie and Scott Randell
 Renaissance Charitable Foundation Inc.
 Robert L. Fischer Trust
 Estate of John R. Roeser
 Ann and Paul Sagan
 Schmidt Futures
 Henry and Christina Shea
 Estate Laura D. Sidlek
 Silicon Valley Community Foundation
 Harold Simmons Foundation
 Brian J. Smith and Laurel Spellman
 David A. Smith and Nancy H. Smith
 Starbucks Coffee Company / The Starbucks Foundation
 Taiwanes Association of America Inc.
 Samuel E. & Mary W. Thatcher Foundation Inc.
 Tiffany & Co.
 Timex Group
 Tull Charitable Foundation Inc.
 William D. Unger

United Nations Foundation
 Varde Partners
 Vet Voice Foundation
 Wilbur Labs
 Estate of Dorothy Winkey
 YourCause

**Founder's Council
 Lincoln Clark Society**
FY22: \$25,000-\$99,999

Joseph and Sophia Abeles Foundation Inc.
 Kenneth L. Adams
 Alexander Aganin
 Ainslie M. Foundation
 David T. and Jean K. Akers
 Alba Alamillo and Jared Levy
 Harry and Jane Alburger Charitable Trust
 The Altec/Styslinger Foundation
 Ameriprise
 Amida Technology Solutions
 Anonymous (18)
 Applied Materials
 Arthrex
 Artisanal Brewing Ventures
 Aspiring Angels Foundation
 AT&T
 The Ayco Charitable Foundation
 Susan M. Barnum
 Davut Beresi
 Daniel Berger
 William Biggs
 Ken Birman and Anne Neirynd
 Edmund H. Blakeman Trust
 Madeline and Alan Blinder
 Jennifer Bloom
 John W. Bloom
 The Body Shop
 Lawrence Bohn
 John Borton
 The Boston Foundation
 Ivey Bostrom
 The Branson Family Foundation
 Mary A. Brauer
 Louise and Duane Bretzke
 James and Adean A. Bridges
 Richard Briggs Jr.
 Brown Family Endowment
 Bruni Foundation
 Mary Catherine Bunting
 Robert P. Burchard Trust
 Molly Burke
 Susan Okie Bush
 C.E. and S. Foundation Inc.

The Virginia Wellington Cabot Foundation
 John Stephen Cafilisch and Elizabeth Cafilisch
 California Community Foundation
 Antares Capital
 Lee Carpenter-Long
 Carruthers Family Fund
 Celo Foundation
 John R. Chandler
 Charities Aid Foundation of America
 Charles Schwab Foundation
 John S. and Sherry H. Chen
 The Chicago Community Trust
 Barbara Christine CRUT
 Raheem Clemmons
 Cogan Family Foundation
 Darren W. Cohen
 Colgate-Palmolive
 Richard and Linda Collier
 The Columbus Foundation
 The Community Foundation for Greater Atlanta
 Susann Connors and James Connors
 Coverys Community HealthCare Foundation
 COVIDPunks
 Jonathan Crane
 Sullivan and Cromwell
 Susan M. Crown
 Glen A. and Lynne Cunningham
 Gerald R. and Jeanne Curtis
 Thomas J. Cutillo and Priscilla A. Myrick
 Jacob W. Dale and Jason Liptak
 Philip Daluge
 Dame Family Foundation
 John R. & M. Margrite Davis Foundation
 Debicki Foundation
 Dentons Europe
 The Diamond Family Foundation
 Bob and Terri DiMeo
 Discover
 Donum Dei Foundation
 Dos Gardenias
 Kenneth Douglass Foundation
 Dr. Scholl Foundation
 John D. Dreisbach
 Dume Wolverine Foundation
 Robert Bowie Duncan
 Douglas Dunn and Donna Gaab
 Morrie L. Eakin Revocable Trust
 Ceree Eberly
 The Walter and Ursula Eberspacher Foundation

Kerry M. Ehrin
 Estate of Mark Eisner Jr.
 The Ellis Foundation
 Joseph H. and Barbara I. Ellis
 Kenneth Elmer
 Estate of Ellen Eppers
 Lynne and Hubbard Erickson
 Stephen Esser and Dana Dortone
 Nancy L. Evans Admin Trust
 Scott C. and Elizabeth P. Evans
 Todd and Dorothy Evans
 Leonard Fairorth
 James M. Farrington
 Tracy and Mark Ferron
 Fiserv
 Edward R. Fisher Charitable Foundation
 Samuel Fishman
 Arlene F. Flom Irrevocable Trust
 The Friedkin Foundation
 The Frieze Foundation
 The Nicholas R. Frost Jr. First Party Special Needs Trust
 Lloyd A. Fry Foundation
 Rita E. Gallagher Living Trust
 Garda Capital Partners
 Andrew and Jane Geisse
 Deirdre M. Giblin and David B. DuBard
 The James J. Glasser Gift Fund
 Global Impact
 Goldman Sachs Gives
 Penelope Goodfriend
 The Donald G. Goodwin Family Foundation Inc.
 Google
 Jill R. Gordon
 Martin and Kerrilee Gore
 The Gottesman Fund
 Byron A. Grant
 Greater Horizons
 Greystone & Co.
 RoseAnn and Dale Gunther
 Steven L. Hackbarth
 Linda and Frederick Haddad
 Carl and Cynthia Hammer
 Kenneth L. Hankins
 Jack and Caroline Hardin
 Estate of Juliet F. Harding
 Jane and Van Harissis
 William Harris
 Alan and Kim Hartman
 Susan Hassan
 Jacob Hawley
 Hearst Corporation
 Nicholas S. and Susan D. Hellmann

John T. and Felicia K. Hendrix
 Wes Heppler
 Elizabeth C. Hock Trust
 Karen and Mark Holzberg
 Barry and Renee Honig Charitable Foundation
 Robert Horowitz
 Christopher and Barbara Hügli-Jones
 Julia Huiskamp
 David L. and Sara E. Hunt
 Ruth Meller Hurshman Trust
 Alan and Glen G. Husak
 Glenn H. and Deborah Dow Hutchins
 Russel Ignarro
 Insight Global
 iSeatz Inc.
 Alice Jablonski
 The Gray Jacklin Charitable Trust
 Hamilton E. James - James Family Foundation
 Raymond James Charitable Endowment Fund
 Richard J. and Involut V. Jessup
 Johnson & Johnson
 Ann and Charles Johnson
 Bill Jones
 Radhika Jones
 Eric Jorgensen
 Joy Global Surface Mining Inc.
 Marguerite and Joseph Keefe
 Marc Keffer
 Tim Kelley and Chung-Wei Ng
 Kelly Services Relief Fund
 Mark Kelso
 Quentin Kennedy
 Thomas and Suzan Kenworthy CRT
 Richard and Gloria Kerns
 Kilpatrick Townsend
 Michael and Eunice Kim
 Jeffrey Kinney
 Joshua Klayman
 Komatsu USA
 Milton A. and Charlotte R. Kramer Foundation
 Cynthia Kriebble
 Richard T. LaBrecque Trust
 Barry Lang
 Latham & Watkins
 Lavin Family Foundation
 Pauline P. Lee
 The Leibowitz and Greenway Family Charitable Foundation
 Johanna E. Levin
 The Lichtenberger Foundation
 Leon Lowenstein Foundation
 LSP Family Foundation

Lubert Family Foundation
 Sharon D. Lund Foundation
 Peter H. Lunt and Pilar Vasquez-Lunt
 Cathie Lurie
 Morgan and Jan Lynch Family Trust
 Tessa Lyons and Sam Steyer
 Wendy and Robert Macdonald
 Vanessa Majalca
 The Malley Family Foundation Inc.
 Daniel Maltz
 Manners M. Foundation
 Ned and Francoise Marcus
 Rama Marda
 Marin Community Foundation
 Frank and Susan Mars
 June Mathis
 Estate/Trust of Willard Matteson
 Kathleen McCarthy
 Kristi and Mark McCombe
 McCormick & Company Inc.
 Estate of Judith F. McGee
 H. Conrad III and Sarah S. Meyer
 Estate and Trust of Jean A. Meyer
 Christopher D. Miller and Catherine McNamee
 Gail and Gerrish Milliken
 The Minneapolis Foundation
 The MITRE Company
 Mohammed Moinuddin
 Estate and Trust of Winfred L. Morris Jr.
 Richard Morrissey
 Estate of James R. Moss
 Thomas Mullooly
 Multiple District 19 Lions
 Dawn M. Neiser
 New Balance
 New Hampshire Charitable Foundation
 Luellen J. and Ronald G. Newmann
 Madelyn M. Niessner
 The Colleen & Sam Nunn Family Foundation
 Michelle Nunn and Ron Martin
 Patricia and Michael O'Neill
 Christopher O'Leary
 Obama Foundation
 Stasia Obremsky and Dan Carroll
 Oceanit
 Olivela Inc.
 The Osborn Foundation
 JP and Claire Paquin
 Paradise on Earth Fund
 Monomi Park
 PayPal
 Nelson and Claudia Peltz

PepsiCo Inc.
 Pamela Peters
 Erna and Bob Place
 Michelle J. Pyle
 Susan and Robert Quinn
 Nelda L. Rankin Trust
 Theodora Retsina
 John and Cammie Rice
 Lieve Roelandt
 Stephan Rohacz
 Lynn and Peter Rohlf
 Christopher Rolfs
 Larry and Jaunita Romine
 *David Rose
 Horacio Rozanski
 Salesforce
 Estate of Robert Samberg
 San M. Foundation
 Elizabeth M. Satterfield
 The Scheefe/Schmitt Family Charitable Fund
 The Helen and Aaron Schlaffer Foundation Trust
 Michael and Susan Schwartz
 The Seattle Foundation
 Jon and Kim Shirley
 Schultz Family Foundation
 Shutterfly Inc.
 Shutterstock
 Sikand Foundation Inc.
 Dot Sikora and Bill and Stephanie Kennedy
 Estate of Jeffrey Skeer
 Timothy J. and Lisa Sloan
 Snark M. Art
 Sonecha M. Foundation
 SophiaGrace Foundation
 SoulCycle
 Southern Glazer's Wine & Spirits
 Malcolm K. and Penelope J. Sparrow
 The Spurlino Foundation
 Elizabeth Steele
 Estate of Joyce L. Steier
 Mark Stevens and Mary E. Murphy
 Campbell Steward
 Yvette Stokes
 Hayes Stover and Patricia Stover
 Catherine and Chris Stroup
 Gunter G. Strumpf CRUT
 Mughith Sukhtian
 Phyllis Whitney Tabor Trust
 The Ping Y. Tai Foundation Inc.
 Edward Tarte Life Insurance
 Taurus Investment Holdings, LLC
 TEDxWomen-Georgia

Eda Tenenbaum Giving Fund
 Joyce and William Thibodeaux
 Christopher Thro
 Juan Gallardo Thurlow
 Tim M. Foundation
 The Trio Foundation of St. Louis
 Tsadik Foundation
 Tylis Family Foundation
 Unchain Fund
 UPMC
 Estate of Beverly A. Van Dyke
 Linda Van Pelt
 Victoria's Secret
 Vimian Group
 VINCE.
 Viola Foundation
 VMWare
 Kurt and Beth von Emster
 Lucienne Wald Insurance Annuity
 Dennis Walo
 Estate of Bettie B Ward
 Lee Landry Ward and Rob Ward
 Matthew McDonald Watkins
 Rosalie J. Coe Weir Foundation
 Joachim F. and Rose D. Wernicke
 Rev M. Whitaker
 Marc K. Whitehead and Sheila M. O'Brien
 Emily M. Williams
 Williamson Family Trust
 Sheldon Wolfe Revocable Trust
 Wolverine Worldwide
 World Cocoa Foundation
 Caleb and Johanna Wright
 Wurtzel Family Revocable Trust
 James Yorke

**Founder's Council
 Arthur Ringland Society**
FY22: \$10,000-\$24,999

Joseph Abraham
 AccelByte
 Susan Aderhold
 Iqbal Ahmad
 Shahnaz Ahmed
 Sohail and Shazia Akbar
 Melissa Allbritten
 Alison Allen
 Junius D. Allen
 The Miller Allen Charitable Foundation
 Samuel and Angie Allen
 Alpha and Omega Semiconductors
 Ruth Altheim
 George and Herawati Alvarez-Correa
 Maria A. Amat

American Amusement Machine Charitable Foundation (AAMCF)
 Saeed Amidhoozour
 AMOA Coin-Op Cares Education and Charitable Foundation
 Craig G. Anderson
 Eugenius Ang and Agnes Ang
 Anonymous (27)
 John and Wendy Anzalone
 The Apatow Family Foundation
 Jacob Arabo
 Aramara Beauty
 Argentum
 The Sandra Atlas Bass and Edythe & Sol G. Atlas Fund Inc.
 Leonard D. Auerbach
 Jeanne and Larry Aufmuth
 Robert Aulgur
 Aviv Foundation
 Frank W. Babka
 BackCountry
 Richard Bae
 Thomas and Marcia Baertlein
 Bobbie Bailey Foundation
 James N. Bailey
 Baldrige Family Foundation
 Margaret D. and Matthew T. Balitsaris
 Cecile Falk Balsler
 Patricia Barmeyer
 Fernando Diez Barroso
 Andrew Barroway
 Dennis M. Barry
 Robert and Margarita Bartels
 Aloha Bay
 The Beall Family Foundation
 Nina Beattie and Michael Eberstadt
 Julia H. and Michael A. Becke
 Joseph and Rachel Beda
 Michael G. and Diane Beemer
 Gregory and Paula Benkovic
 Estate of Donald and Marjorie Bentley
 Cosette Bergin
 Larry and Kathy Berkbigler
 Richard E. Berry Trust
 Bessemer Trust Company
 Cornelia and Michael Bessie Foundation
 Lyle G. and Susan A. Best
 Donald and Sheila M. Billings
 Amy Black
 Oliver and Jenny Blackman
 Steven Blader
 Terry Blanken and Dennis Swartzlande
 Carsten Blase
 Lawrence Blaskopf

Marcia W. Blenko and Don B. Blenko Jr.
 Trust of Lillian Bloom
 Blue Moon Fund
 Joseph Boatwright
 Bock Family Gift Fund
 Karl and MaryAnn Boehmke
 Colleen Bondy
 Jeanine M. Borthwick
 The Boston Consulting Group, Inc.
 The Boston Foundation
 Mathew Boudreaux
 Teresa K. Boutin
 Byron Braymen
 Bread Financial
 John and Margaret Brennan Charitable Trust
 The Briar Foundation
 Estate of Carldon H. Broadbent
 Dan W. Brock Trust
 Thomas Broker and Louise Chow
 Johanna Brookner
 Finn Brooks Family Foundation
 Buddhist Global Relief
 William Buffett
 Ross Buhrdorf
 Helen and Harold Buirkle
 John Burch
 Elaine Burke
 Patrick Butler
 Peter Buzy
 Camunda Inc.
 CNA Foundation
 Thalia and Michael C. Carlos Foundation
 The Curtis L Carlson Foundation
 Calvin and Kelly Carter Family Foundation
 Jessica Case
 Mary Warren Case and Stanley E. Case
 Gerhard and Regina Casper
 Nancy R. Casper
 Elizabeth A. Casselman
 Martha R. Casteel
 Estate of Mary S Chadbourne
 Mike and Julie Chang
 Change Healthcare
 Edward and Janis Cherry
 Chiesi USA
 Dara Childs
 Amy Chitty
 Darrell Chodorow and Helaine Resnick
 Lawrence Christensen
 Tim Chu
 The Chubb Corporation
 Cigna

Civetta Therapeutics, LLC
 Virginia B. Clark
 Courtney Clayton
 The Cleveland Family Foundation
 John R. Cleveland
 The Walter Clifton Family Fund
 Ernest and Wendy Cloutier
 John H. Clowes
 Eleanor B. Cobb
 Roy Cockrum
 Frank P. Cofone
 John Colbert
 Jennifer Cole
 Titilope and Wale Cole
 Virginia F. Coleman
 John and Janine Colich
 Ruth M. Collins
 Community Foundation for Monterey County
 Community Foundation of Greater Memphis
 Community Foundation of the Ozarks
 Shawn Concannon
 John and Stephanie Connaughton
 Contran Corporation
 Marvin Copley Trust
 The Cosman Family Foundation
 Dean Coughenour Trust
 Rhonwyn Counihan
 Jean D. Crane
 Richard E Crawford
 Critical Role Foundation
 Magdalen Crolla
 Stephen Cumbie
 Cuna Mutual Insurance Group
 Catherine A. Curtis
 Ellen Cutler
 Phillip Czyzewski
 Canute Dalmasse
 Robert and Carole Daly Foundation
 Mark Davidow M.D.
 Edward Davis
 Jeffrey Davis
 Richard T. and Sally S. Dawson
 The Dayton Foundation
 Electra de Peyster
 Matthew and Kacey DeBeer
 Richard C. Devereaux Foundation
 Consuelo and Saul Diaz
 Mark Dickinson and Letizia Stanghellini
 John E. Dixon
 Shirley A. and Terry Dobson
 Helen G. Doppelt
 Matthew J. and Gwen Doran

Carole and Tommy Dortch
 Kevin Douglas and Beatrice Olson
 Dox Foundation
 Estate of Ann Dursch
 Ms. Ellen Duttweiler
 Eaglemere Foundation
 Eleanor Edmondson
 Donald R. Edmonston
 Doug and Florida S. Ellis
 Robert and Susan Engelke
 Esmond Nissim Foundation Inc.
 Jeanne B. Ettelson
 Herbert and Jeanette Evert
 Patricia Weiss Fagen
 Fairfield County Community Foundation
 Fawn Lake Country Club
 James W. and Tammy G. Felt
 Lynne and Leon Ferder
 Maria Fernandez
 David L. Ferrera and Vinita Chopra Ferrera
 Fighting Eel
 Estate of Saralee Fine
 The First Parish in Lincoln
 Five Talents Foundation
 Flake Pie Co.
 Diane and Tom Flanagan
 Jody F. Fleischer
 Michele Flournoy
 Brian and Donna Fogle
 William H. Foot
 Anthony Fornetti
 Stephen T. Forrest
 Gregg Foster
 Russell Foszcz
 Foundation For The Carolinas
 Lewis Fountain
 Stephen E. Fountain
 Anthony Fouracre and Martha Okie
 James and Sharon France
 Jon A. and Susan Frieboes
 Ronn Friedlander
 Mark Friedman
 Marian C. Funderburk Trust
 The Philip and Irene Toll Gage Foundation
 Anya M. Gallery
 General Electric
 General Mills Inc.
 Georgia-Pacific
 Charles C. Gerber
 Sander Gerber
 Ghost Story Games
 Hamish Giannini

Richard Gilliam
 Mary Ginn
 Annie Bennett Glenn Fund
 The Wilbur and Hilda Glenn Family Foundation
 Global Giving
 Pam and Bobby Glustrom
 Slawomir W. Golasz
 Brian and Lynn Good
 Geoffrey A. Goodman
 Cecilia and Douglas Gordon
 Elizabeth Gorman and Mark Kritzman
 Robert D. and Linda Graham
 Jon and Mindy Gray
 Robert A. Green Living Trust
 Alan Greenfield
 Alex Gremmo
 Jeffrey Greve and Janis Kahn
 William C. Griffith
 Frank X. and Carol M. Gruen
 Robert I. and Susan S. Guenther
 Winston and Helen Guest
 Ms. Amy S. Guth and Timothy F. Guth
 The Marc Haas Foundation
 Eugene G. Hagewood
 Paige Hagle
 Paul R. and Lisa Haller
 Douglas and Mary Hallward-Driemeier
 Linda Haluptzok
 Douglas W. and Tsognie Hamilton
 Benjamin Hankins
 Barbara J. Hanlon
 Michael F. Hansen
 Everett Harper
 Harrington Family
 Scott Hawks
 Mark and Jeanne Heatherly
 Bruce Heflinger and Mary DeMasters
 Mark Heising and Elizabeth Simons
 Timothy Helton
 Bart Henderson
 Erin Hennessey
 William Herkes
 Matthew Herndon and Catherine Somerton
 John R. Herr and Kathleen M. Doyle
 Carl Hess and Tracy Pirnack
 Theodore Hester
 T M. Hickman
 Jan Hines
 Crypto M. Hobos
 Hobson/Lucas Family Foundation
 Paula Hodgkiss
 Dr. Jeffrey Hoffman
 Katerina Holblad-Fadiman and Jeffrey

Fadiman
 Frank and Lora Holsenbeck
 Gerda W. Hoover Trust
 Sandra Horbach and Steven Skoler
 Richard Horn
 Nancy and Douglas Horsey
 Winnifred Howard Trust
 Lincoln Howell
 Meade Hower
 Charles and Margaret Hucks
 Carl C. and Marilyn Hug
 Zan V. Hughes
 James and Betty Huhn
 Jasmin Hume
 The Ann Hyatt and James Donald Kenney Family Foundation
 Illinois Tool Works Foundation
 The Imlay Foundation Inc.
 IMVU
 The Israel/Best Family
 Raymond Jablonowski
 Sandra G. Jackson
 Joseph and Jeannine Jeffs
 Marsha and Jeff Jellin
 Kay D. Jennings Traditional IRA
 Jewish Communal Fund
 Erick Jimenez
 JJJ Charitable Foundation
 Ann and Lee Johnson
 Benjamin Johnson Family
 Chris A. and Carolyn L. Johnson
 Gil Johnson and Suzie Johnson
 Jenny Johnson Family Foundation
 Rilwan Johnson
 Tom and Edwina Johnson Family Foundation
 Estate of Carolyn Ann Jones
 David Jones
 Kristin H. Jones and Robert W. Jones Jr.
 Steve Jurvetson
 Michael G. Kaehr
 Paul Haahr and Susan Karp
 Sheridan and Jerome Kassirer
 The Ina Kay Foundation
 Keare/Hodge Foundation
 Michael and Carol Kearney
 Andrew Keiser
 Kellcie Fund
 Estate of Rosemary A. Kelly
 Theodore Kelly
 Michael A. and Dona M. Kemp
 Keough Family Foundation
 James Scott Key
 Kindergarten Unit Foundation
 Russell King

King & Spalding LLP
 King Estate Winery
 Ann and Knight Kiplinger
 KLA Corporation
 Paul L. and Berta Klopsch Trust
 Noah Klugman and Lane Powell
 Rick A. Kneisley
 Kathleen Knepper
 Robert Koch
 Kittu and Vini Kolluri
 KSS Architects
 Kramer Partners
 Robert L. Kuehlthau
 Karen Kusserow
 June L. La Point Trust
 Estate of Robert and Elizabeth Lambert
 Annie Lamont
 Estate of Carl E. Langenhop
 Kenneth A. Lattman Foundation
 Richard LeFrak
 Roger W. Legare
 Martin Leibowitz
 Adam Lerer
 James G. and Carol A. Lertola
 Les Oiseaux Foundation
 Lisa Lesavoy
 Rodney Levine
 Ken Levy
 Mark Lewine
 James A. and Donna Lewis
 Gabriel and Julie Ling
 The Litterman Family Foundation
 Robin and Tom Liu
 Barbara Lockridge
 Sheila Lombardi
 Edward and Claire London
 Kristin and William Loomis
 Antonio Lopez
 J. Michael Losh
 Zachary Luce
 Gina Lujan
 Donald and Cathey Lynn
 The M. Foundation
 The M. Fund
 Bryan MacPherson and Pamela Van Hine
 Thomas and Joanne Magliozzi
 Alex and Doris Malaspina
 Raja Malkani
 Joseph and Laurel Mancino
 Mandula Family Foundation
 Dominic Mangone
 Joseph R. and Linda K. Manthey
 Maurice Marciano Family Foundation

Markel Corporation
 Frank Markowitz
 Joseph G. Martin Jr.
 Priya Mathew
 Natalie J. Matinho
 Peter and Robin Matt
 Allan Maule
 Nancy L. Mauro
 Brian K. and Anne S. Mazar
 Kathleen McCabe
 Keith and Mary Kay McCaw Family Foundation
 Elizabeth L. McCloskey
 Robert McColl
 John F. McDonnell
 BC & DJ McFarland Foundation
 Brian and Mary McHugh
 Chris and Lisa Mclvoy
 M. Craig McKibben and Sarah E. Merner
 Stephen McKinney-Whitaker
 McMaster-Carr Supply Co.
 Bernadette McMenamin
 Estate and Trust of William McNamee
 Chuck and Cindy Meacham
 Amy Patricia Meade-Knaack on behalf of Authors for Ukraine
 Medallia
 Nancy and George Melling
 Merck & Co. Inc.
 Julie Mikuta
 Diane Millen
 Miller Family Fund
 Scott M. Miller
 William and Betsy Miller
 Glen S. and Alison Milliman
 George Mills and Beth Mills
 Mimecast
 Cindy Mincey
 Eric Mindich
 Edward and Ginger Mitchell
 Mukund and Shanta Modak
 Joe Moglia
 Michael Moheimani
 Molina Family Foundation
 Molitor Family Foundation
 Steven Molo and Mary Molo
 MoloLamken
 John B. and Kristi B. Mooney
 H. Lynn Moore Jr.
 James Starr Moore Memorial Foundation
 Merle and Ellen Morgan Gift Fund
 Tyler and Cindy Morrey
 Gunther Mosinger

Sandra Moss
 Jon and Shelley Motley
 Mouat Charitable Trust
 Miriam P. Mount Life Insurance
 Adm. Mike Mullen
 Sean Muller
 David F. Murray
 National Financial Services LLC
 NBA Properties Inc
 Ruby T. Nees Revocable Living Trust
 Frederick Nelson
 New Horizon Foundation
 Newell Brands
 Shirley H. Nichols Foundation
 Donald Nickelson
 Arthur C. Nielsen Jr. Family Charitable Trust
 Eleanor Nishiura
 Kristina Norris
 The William and May D. Norris Foundation
 Northwest Connecticut Community Foundation
 Norvell Family Foundation
 Novelis
 Paul and Barbara Nowak
 NuScale
 Clare O'Brien and Charles Doane
 Laurel B. and Edward W. O'Connor
 T M. O'Connor
 Maureen O'Hara and David Easley
 Timothy O'Leary
 Matthew P. and Ellen O'Loughlin
 Paul Oakland
 Lee W. and Debbie Oatey
 Nils Odegard
 William Okerlund
 Joseph S. Oliner Revocable Living Trust
 James Olivier
 Omaha Community Foundation
 One4All Charitable Fund
 Open Symmetry
 Gilman Ordway
 Steven R. and Sandy S. Ormiston
 Amy and Paul Osenar
 Joe Ouaknine
 Earl Owens
 Leigh Ozdemir
 Nicole Palczynski
 David J. Parker
 Oliver Parker
 Mike and Maureen Parks
 Monika Patel
 Wendy Paul

Jerrilyn D. Pease
 Alan and Lesley Pedersen
 Kathryn E. Pedersen Trust
 Lynda Pelissier
 Estate and Trust of Angelina P. Perdomo
 Mr. Perkins
 Allen Perrel
 Charlotte Perret
 Margaret C. Perrone
 Pershing LLC
 Louis Perwien
 Peter
 David Peyton
 Pianta Technologies
 Judy Pigott
 The Pincus Family Foundation
 Fred Pittrof
 Virginia Pitts
 The Pittsburgh Foundation
 The Plymouth Rock Foundation
 Randall E. and Cynthia Pond
 Power Corporation of Canada
 Estate of Annemarie Prance
 Kevin Pratt and Pamela Lane Pratt
 Janet Price
 PVH Corp.
 Qualcomm
 Terrence and Joann Quinn
 R.K. Squire Company
 The Randall Family Foundation
 Yeming and Aaron Rankin
 Estate of Jay Rashkin
 Trust of Maurice G. Raymond
 Steve Raymond
 The Realan Foundation
 The Reed Foundation
 Martha L. Rees
 Brent and Barbara Reid
 Barbara and Jack Reis
 Philip E. Reischman
 Sarah Reynolds
 RGA Reinsurance
 The Rhode Island Foundation
 Paul Richards and Sivan Ayla
 Dr. Marsha Slater Rider
 Gordon and Jean Riel
 Mary Robinson
 Jim Rochelle
 Mrs. Rogers
 David and Masako Rosen
 Fanny and Stephen Rosenak Foundation
 The Dorothea Haus Ross Foundation
 Rose Webb Roven

Linda Rupert and Robert Rupert
 Gene and Barbara Sackett
 Christopher Salamone
 San Diego Optimum Compounding Pharmacy
 Jesse S. and Carrie Sanders
 Lee and Cecilia Sandwen
 Nott G. Sankar
 Dan M. and Pam Sargent
 Alfred and Susanne Sauer
 Susan M. Schaffer and Joan Hinckley
 Mary Beth Scheid
 The Schimmel Family Foundation
 Stefan H. Schmieta and Dorte Wohmann-Schmieta
 Barton D. and Mary Schmitt
 Robert and Chrys Schmults
 Elliot Schrage and Juliet Whitcomb
 James Schroeder
 Mark Schupack
 Peter M. Schwab
 Gregg S. and Kim J. Sciabica
 Seattle-Sonoran Foundation
 Second Presbyterian Church
 Carl and Cassandra Segal Charitable Trust
 Ron Segall
 George and Carol Seger
 Ari Selman
 Adam Sender
 Terry Seng
 Dr. Samuel Sessions
 Ralph O. Severance
 Sudhir and Jyotsna Shah
 The Sherwood Foundation
 Kristopher Shinn
 Dorothy B. Shirley
 Andrei Shishov and Irina Shishov
 Richard and Diana Shore
 Binkley and Paula Shorts
 John Eckfeldt and Nancy Shultz
 Glen Siegel
 Alice Simpson
 Jennifer Sims
 Murali and Gouri K. Sivarajan
 Skyscrape Foundation
 Geoffrey Smith
 Sherrill Smith
 Timothy D. Smith and Karen E. Miller
 Robert B. Snell
 Jonathan Solovy and Stacey Fisher
 Simi Sonecha
 SonicWALL Inc.
 Steinberger Soucy Family Fund
 Charles and Elizabeth Spalding

Martha J. Spalding
 Martin J. Spalding
 Joanne and Richard Spillane
 Babara C. Squibb Trust
 Michael Stanfield
 William Stanhope and Kristen Keirse
 Richard Stengel and Mary Pfaff
 Robert Stephen
 Robert Stewart
 Evelyn Steyer
 Martin Sticht
 Harold and Lambertha Stier
 Herson Stirman Family Foundation
 John and Mary Louise Stover
 Diana L. Strassmann and Jeffrey Smisek
 Barbra M. Streisand
 Martha and William Stueck
 Vladimir and Alla Subbotin
 Candice Sullivan
 Donald and Chacea Sundman
 Joe O. Swain
 Estate of Dorothy J. Swanson
 David and JoEllen Sweet
 Thomas W. Swidarski
 Lynne and James Sykora
 Margarete Talarico
 Estate of Alfred F. Talbot
 DN Tanks
 Brian Taylor
 Susan Tebos
 Arthur T. and Doris H. Tees
 John Tetzlaff and Carol Clark
 TF Management Group, LLC
 Ronald L. Thatcher
 John L. and Sandra L. Thom
 David Thompson
 John A. Thompson Jr.
 Michael Thompson
 Diane M. Thorpe
 David Tichenor
 TisBest Philanthropy
 Ned A. Tisserat and Jan E. Leach
 Trecco Foundation
 Triangle Community Foundation
 The Triple T Foundation
 Stephen Turbek
 US Charitable Gift Trust
 Jim Vandehei
 Jenny Verner
 Alexis and Jessica Viripaeff
 Jasveer Virk and Paul Kavanagh
 Vista Equity Partners
 Thomas Von Lehman and Margaret

Good
 W.W. Grainger Inc.
 Kathryn Waddell
 Wagner Family Charitable Trust
 Lewis Wagner
 George S. and Barbara D. Walker
 Patricia Walsh
 The Walter Family Fund
 Douglas F. and Ann Ward
 Michael and Diane Ward
 Elizabeth G. Watrous
 The Watson Foundation Inc.
 Clyde Watson and Denis Devlin
 Thomas Wattles
 Mission Wealth
 Lynda Webster
 Doug and Tara Weckstein
 Weezie Inc.
 Estate of Mark Weigel
 Lynne and David Weinberg
 Jack Weisberg Charitable Foundation
 Jenelle Weller
 Richard Westin and Susan Westin
 Patrick B. Wheeler
 David J. Whippo
 Geoff and Sally White
 Kevin and Eileen White

Stephen A. White
 James D. Whitehead
 Robert Wilder
 Michael and Geraldine Wiles
 Barbara and Edward Wilson
 Robert J. Wilson
 Joshua and Jennifer Witz
 The Carvel and Margaret Wolfe Charitable Fund
 Dick H. Woods Jr.
 Peter Wortman
 John B. Wright
 Timothy F. Wuliger
 Margaret Wurtele and Angus Wurtele
 Xperi Corporation
 Daniel Yates and Tobie Whitman
 Suzanne M. Yoon
 Phil Younis
 Mr. and Mrs. William Zabel
 Shadman M. Zafar
 The Zankel Scala Family Foundation
 Zegar Family Foundation
 The Zephyr Fund
 Michael and Diane Ziering
 Tom Zimmerman
 Vera Zimmerman
 David Zwirner



PAKISTAN

CARE leadership

GLOBAL MANAGEMENT TEAM

Stacy Aldinger

Chief of Staff and Strategy

Claudine Mensah Awute

Vice President for International Programs and Operations

Diane Carazas

Regional Director for Latin America and the Caribbean

Madhu Deshmukh

Vice President of Program Strategy and Impact

Ranil DeSilva

Chief Financial Officer

Melissa Heggie

Chief People, Equity, and Inclusion Officer

Eric D. Johnson

General Counsel

Deepmala Mahla

Vice President of Humanitarian Affairs

Kate Maina-Vorley

Regional Director for East and Central Africa

Dr. Muhammad Musa

Regional Director for Asia

Michelle Nunn

President and CEO CARE USA

Sarah Taylor Peace

Chief Revenue Officer

Matthew Pickard

Regional Director for Southern Africa

Monica Rowe

Chief Marketing Officer

Ritu Sharma

Vice President of U.S. Programs and Policy Advocacy

Nirvana Shawky

Regional Director for Middle East and North Africa

Balla Sidibe

Regional Director for West Africa

Gloria D. Steele

Chief Operating Officer

Lona Stoll

Vice President of Impact and Innovation
Chief Innovation Officer

Jerry Tuan

Chief Information Officer

BOARD OF DIRECTORS

CHAIR

Glenn Hutchins

Chairman, North Island
Co-Founder, Silver Lake

VICE CHAIRS

Susan Hassan

Founder
Sea Dune Partners

Radhika Jones

Editor-in-Chief
Vanity Fair

TREASURER

William Mosakowski

CEO and Founder
Public Consulting Group Inc.

SECRETARY*

Eric Johnson

General Counsel
CARE USA

MEMBERS

Runa Alam

Co-Founder and CEO
Development Partners International

Dolika Banda

Former Director
International Finance Corporation,
World Bank Group and CDC Group
Plc, UK

Martha Brooks

Former President and COO
Novelis Inc.

Charlie Dent

Former Congressman and
Policy Advisor

Michèle Flournoy

Co-Founder and Managing Partner
WestExec Advisors

Jay Hallik

Managing Director
Morgan Stanley

Everett Harper

CEO and Co-Founder
Truss, The Infrastructuralists

Seema Jayachandran

Professor of Economics and
Public Affairs
Princeton University

Stephen P. Joyce

CEO and Director
RE/MAX Holdings

Mohamed Kande

Vice Chairman and U.S. Advisory
Leader/Global Advisory Leader
PwC

Tessa Lyons-Laing

Director of Product
Instagram

H. Conrad Meyer III

Private Investor

Valerie Montgomery Rice, M.D., FACOG

President and Dean
Morehouse School of Medicine

Jane Mosbacher Morris

CEO and Founder
To the Market

Michelle Nunn

President and CEO
CARE USA

Una Osili

Associate Dean for Research and
International Programs
Indiana University Lilly Family
School of Philanthropy

Kathryn Petralia

President and Co-Founder
Kabbage Inc.

Horacio Rozanski

President and CEO
Booz Allen Hamilton Inc.

English Sall

Board Member
Sall Family Foundation

Richard Stengel

Senior Advisor
Snapchat

Board Emeritus

Virginia Sall

Co-Founder
Sall Family Foundation

SOMALIA



2022 financial overview

Letter from the CFO

2022 was an extraordinary year for CARE, as we managed to reach the highest level of revenue and program implementation activities in our 76-year history. We saw many countries recovering from the aftermath of the COVID-19 pandemic, while new humanitarian challenges emerged in Europe, with the Ukraine crisis impacting the livelihoods of many women and girls. The emerging global food security crisis has started to impact many vulnerable communities in Asia and Africa. During this period, CARE reached record program implementation costs of **\$748 million**, 14% higher than 2021. We managed to reach more vulnerable communities and were able to serve **174 million** people in **111 countries** through **1,631 active projects**.

CARE's total revenue grew by 22% to **\$888 million** in the fiscal year 2022. CARE also benefited from the continued strong support of our U.S. private donors, governments, and multilateral institutions around the world. Our diversified funding base continues to be a strength. Private revenue of **\$291 million** is up 52% from FY21 with strong performance across all channels, particularly in Major Gifts and Corporate fundraising.

CARE's commitment to stewardship and efficiency enables us to maximize the value of every dollar we receive. We endeavor to be responsible with the resources entrusted to us, evidenced by the fact that **91 cents** of every dollar spent goes toward program expenses. Total program expenses,

sponsored primarily by restricted funds, were **\$76 million** above the original budgets due to implementation of humanitarian programs globally, including in Europe due to the Ukraine crisis.

Our success in 2022 resulted in CARE supporting **11 million** people to advance gender equality; 86% of our projects integrated gender into their work. We assisted **34 million** people who were affected by humanitarian crisis in meeting their basic needs, and provided access to food, water, and nutrition for **41 million** people around the world.

We are tremendously grateful for the generous support from our private donors, U.S. government, and other global institutions that helped CARE to advance our mission.

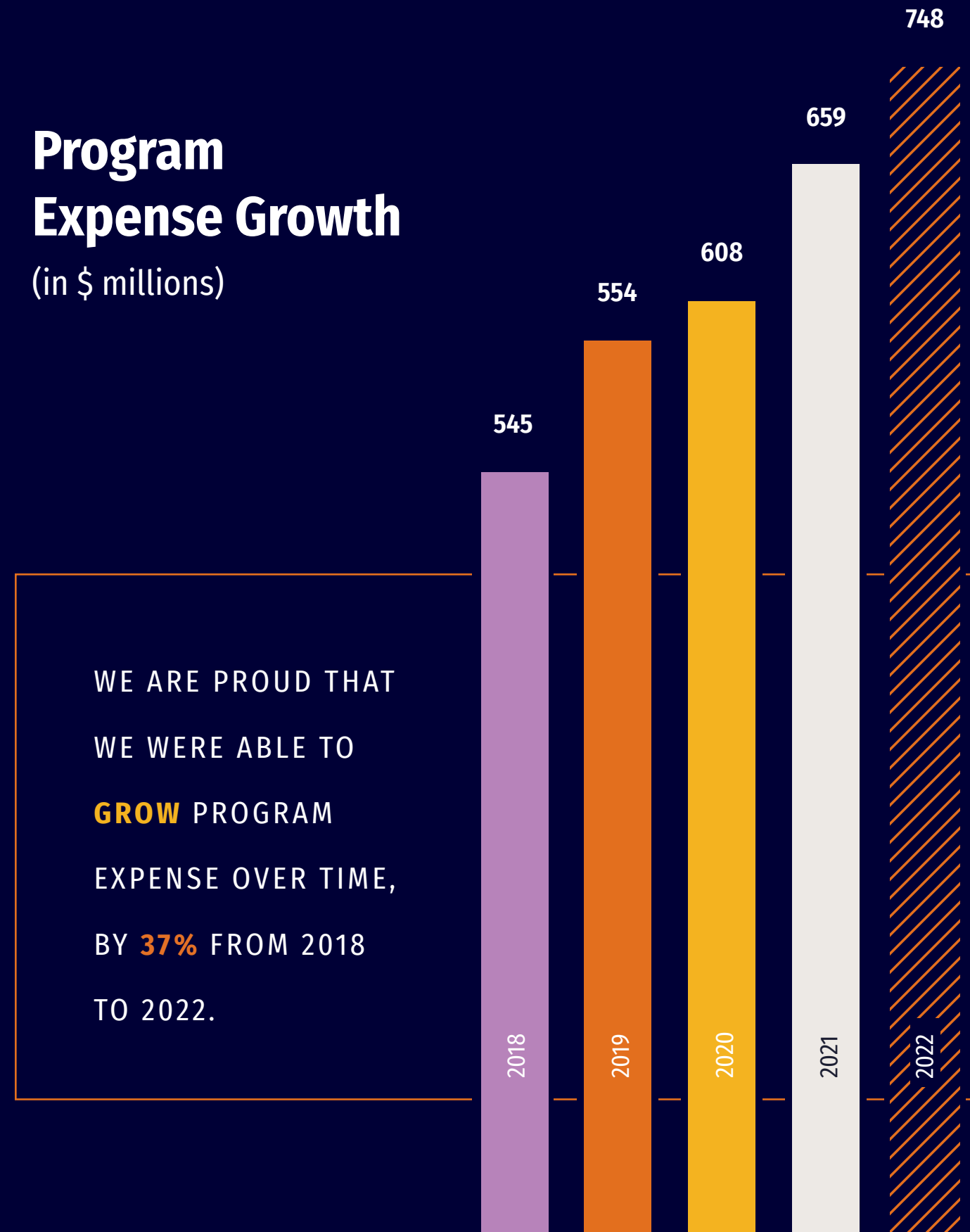
We count on your continued support and contribution in 2023 as we deliver quality services to save lives, defeat poverty, and achieve social justice.

Thank you,



Ranil DeSilva
Chief Financial Officer

Program Expense Growth (in \$ millions)



WE ARE PROUD THAT
WE WERE ABLE TO
GROW PROGRAM
EXPENSE OVER TIME,
BY **37%** FROM 2018
TO 2022.

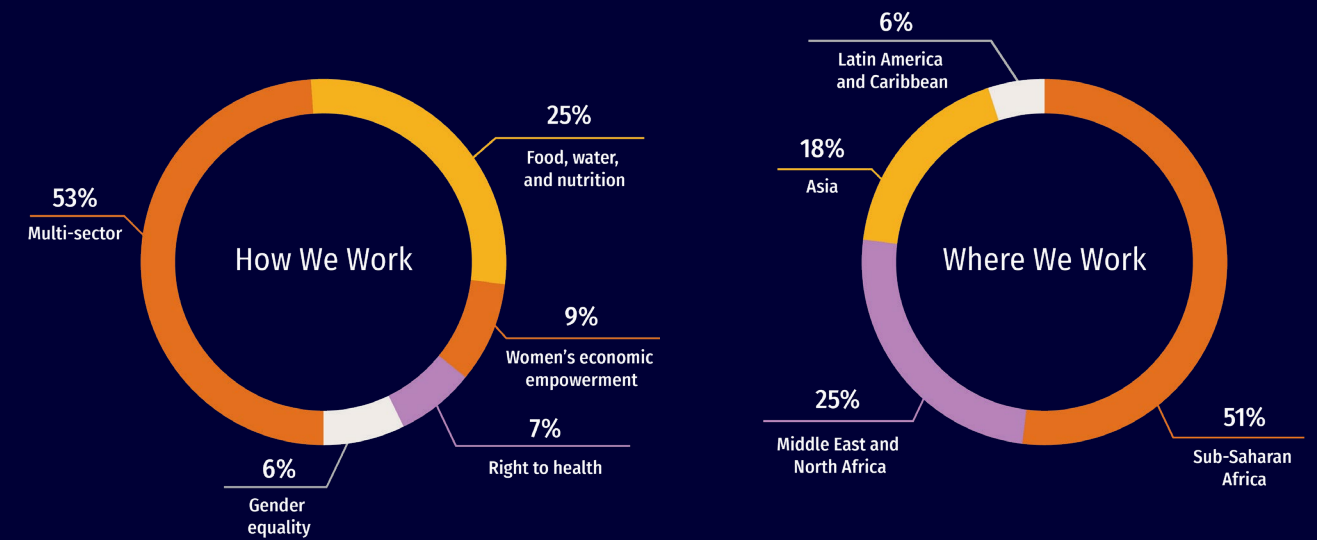
CARE USA Consolidated Statement of Activities

For the Years Ended June 30, 2022 and June 30, 2021

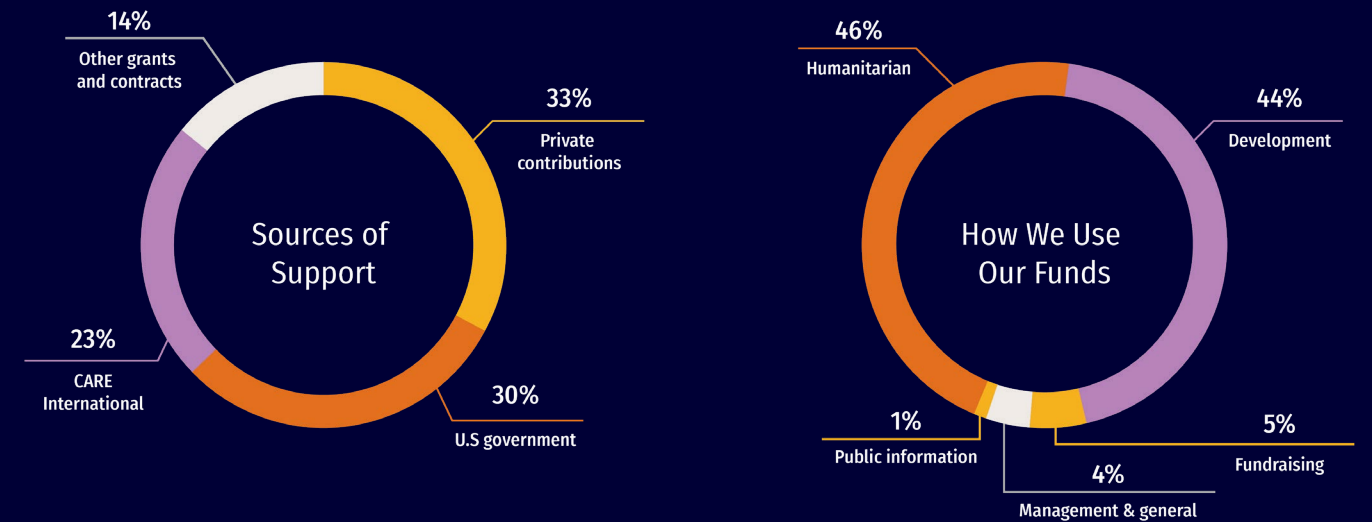
	Without Donor Restrictions	With Donor Restrictions	Total 2022	Total 2021
Support				
Contributions of financial assets				
Private contributions	\$ 149,790	\$ 133,476	\$ 283,266	\$ 179,660
United States government	240,781	–	240,781	204,096
CARE International	199,785	–	199,785	196,591
Other institutional donors	124,535	–	124,535	108,583
Contributions of nonfinancial assets				
Private contributions	–	8,221	8,221	11,994
United States government	25,276	–	25,276	20,354
CARE International	–	–	–	352
Other institutional donors	2,603	–	2,603	4,664
Other revenue	3,436	25	3,461	3,619
Satisfaction of restrictions	92,441	(92,441)	–	–
Total support	838,647	49,281	887,928	729,913
Expenses				
Program activities	747,914	–	747,914	658,572
Supporting activities	70,515	–	70,515	56,703
Total expenses	818,429	–	818,429	715,275
Investment income and other gains and losses	(4,284)	(20,539)	(24,823)	37,874
Total changes in net assets	15,934	28,742	44,676	52,512
Net assets, beginning of year	92,307	292,101	384,408	331,896
Net assets, end of year	\$ 108,241	\$ 320,843	\$ 429,084	\$ 384,408

Financials at a Glance

Program Work Overview



Selected Financial Information





Vision

We seek a world of hope, inclusion, and social justice, where poverty has been overcome and all people live with dignity and security.

Focus

We put women and girls in the center because we know that we cannot overcome poverty until all people have equal rights and opportunities.

Mission

CARE works around the globe to save lives, defeat poverty, and achieve social justice.

Values

INTEGRITY EXCELLENCE
DIVERSITY EQUALITY
TRANSFORMATION



THIS YEAR, JOIN US
AS WE FACE GLOBAL
CHALLENGES AND
STAND ALONGSIDE
OUR COMMUNITIES.



DONATE

Your gift today can help change the world of tomorrow.

Visit: care.org
Email: info@care.org
Call: 1-800-521-CARE (2273)
Mail: CARE Gift Center
P.O. Box 1870
Merrifield, VA
22116

Future Gifts

Help CARE fight poverty through a bequest. Contact Planned Giving at **1-800-752-6004** for information about including CARE in your estate planning.

ACTIVATE

Join the conversation. Mobilize your networks to create a community of CARE.

 [@careorg](https://www.instagram.com/careorg)  [@care](https://twitter.com/care)
 [@carefans](https://www.facebook.com/carefans)  [CARE](https://www.linkedin.com/company/care)

ADVOCATE

Speak up! Join CARE Action and raise your voice in the fight against extreme poverty. Call, meet, inform your elected leaders. careaction.org



JOIN US!

care.org/careers
care.org/get-involved



HEADQUARTERS & SOUTHEAST FIELD OFFICE

CARE USA

151 Ellis Street NE
Atlanta, GA 30303
T: 404-681-2552

CONSTITUENT SERVICES

1-800-422-7385
info@care.org

FIELD OFFICES

Austin

P.O. Box 3609
Cedar Park, TX 78630

Boston

P.O. Box 390292
Cambridge, MA 02139

Chicago

P.O. Box 57569
Chicago, IL 60657

New York

370 Lexington Avenue, Suite 1103
New York, NY 10017

San Francisco

465 California Street, Suite 475
San Francisco, CA 94104

Washington, D.C.

1100 17th Street NW, Suite 900
Washington, D.C. 20036

**Please send donations to
CARE's gift processing center
rather than field offices:**

CARE Gift Center
P.O. Box 1870
Merrifield, VA 22116



PHOTO CREDITS — Cover: Alexia Rae/WIBDI/CARE; Inside Front Cover: Tapash Paul/CARE; Page 7: Lucy Beck/CARE; Page 8/9: Mohammad Hasan Zobayer/CARE; Page 9: Laura Noel/CARE; Page 13: Eman Al-Awami/CARE; Page 14: Martha Tadesse/CARE; Page 16: Lucy Beck/CARE; Page 18: Alexia Rae/WIBDI/CARE; Page 25: SAP Productions/CARE; Page 27: Georgina Goodwin/CARE; Page 32/33: Laura Noel/CARE; Page 34: Tapash Paul/CARE

CARE is an Equal Opportunity Employer and Affirmative Action Employer (AA/M/F/D/V) dedicated to workplace diversity. CARE® and CARE Package® are registered marks of CARE. Copyright ©2023 by Cooperative for Assistance and Relief Everywhere, Inc. (CARE). All rights reserved. Unless otherwise indicated, all photos ©CARE.