



VSLA IN EMERGENCIES

Sample Organigram

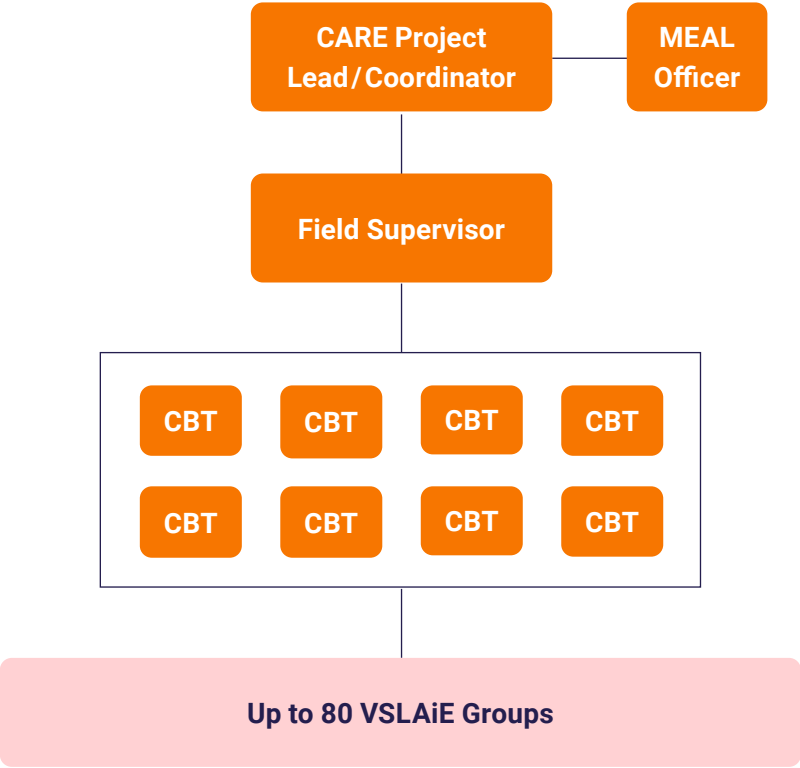
This is a companion document to
[A Guide to CARE's VSLA in Emergencies.](#)

Use this tool as a quick visual reference to ensure all levels of project hierarchy are adequately staffed, and staffing ratios respected.

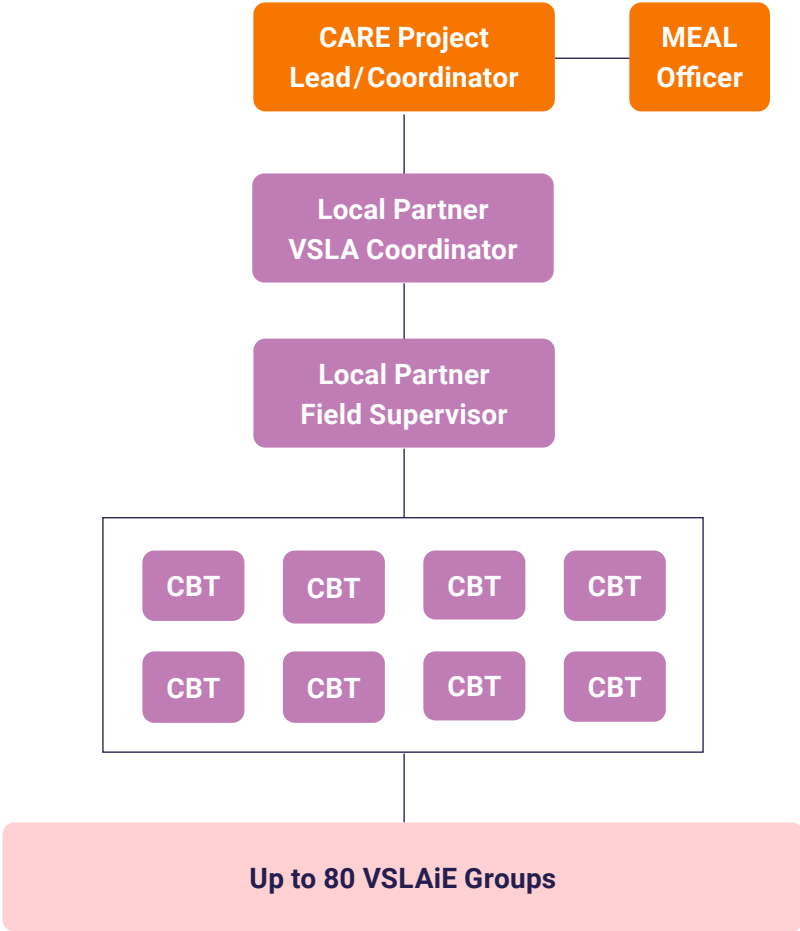
OCTOBER 2025

MINIMUM REQUIRED STAFFING RATIOS:
1 Field Supervisor oversees a maximum of 8 CBTs
1 CBT oversees a maximum of 10 groups

DIRECT IMPLEMENTATION BY CARE

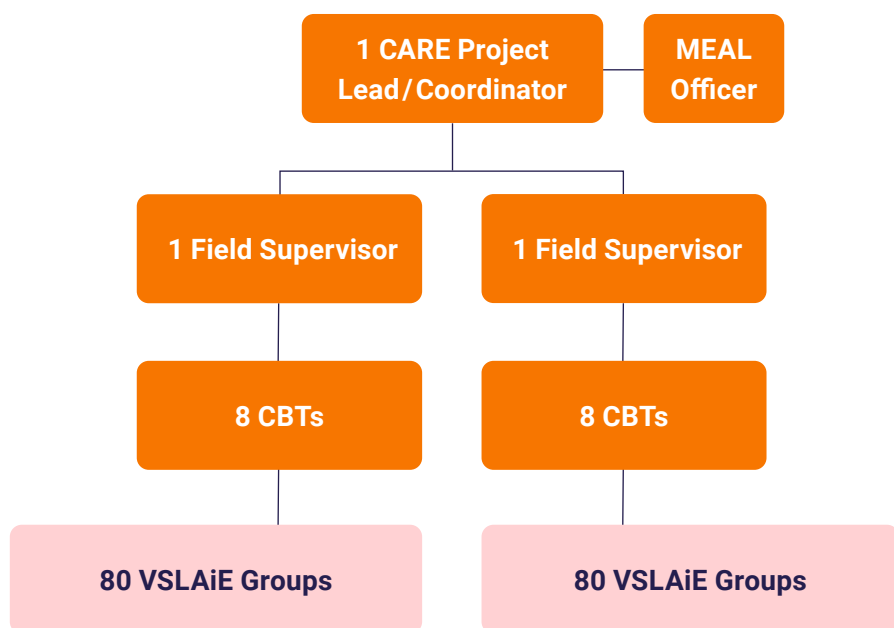


IMPLEMENTATION THROUGH PARTNERS



The examples below assume a project that will establish 160 new VSLAiE groups. Whether the goal is to form more or fewer VSLAiE groups, the staff structure can be flexibly adapted to accommodate the project's scale and objectives, ensuring optimal implementation and support for VSLA activities within the emergency context.

SAMPLE 1: CARE directly implements VSLA in Emergencies and creates 160 groups:



SAMPLE 2: CARE works via a PARTNER implementing organization to create 160 groups:

